



**KEMENTERIAN  
PENDIDIKAN  
MALAYSIA**

**JPT** | **JABATAN  
PENDIDIKAN  
TINGGI**

**SESI TAKLIMAT**  
**PANDUAN CARIAN PATEN MENGGUNAKAN Lens.org**  
**(Patent Search)**

**Prof Dr Mohd Shahir Shamsir Bin Omar**

**15 Januari 2020 (Rabu)**

**Dewan Za'ba, Kementerian Pendidikan Malaysia**

# BUKTI CARIAN PATEN (PATENT SEARCH)

Bukti Carian Paten (Patent Search) perlu dikemukakan bagi setiap permohonan geran penyelidikan.

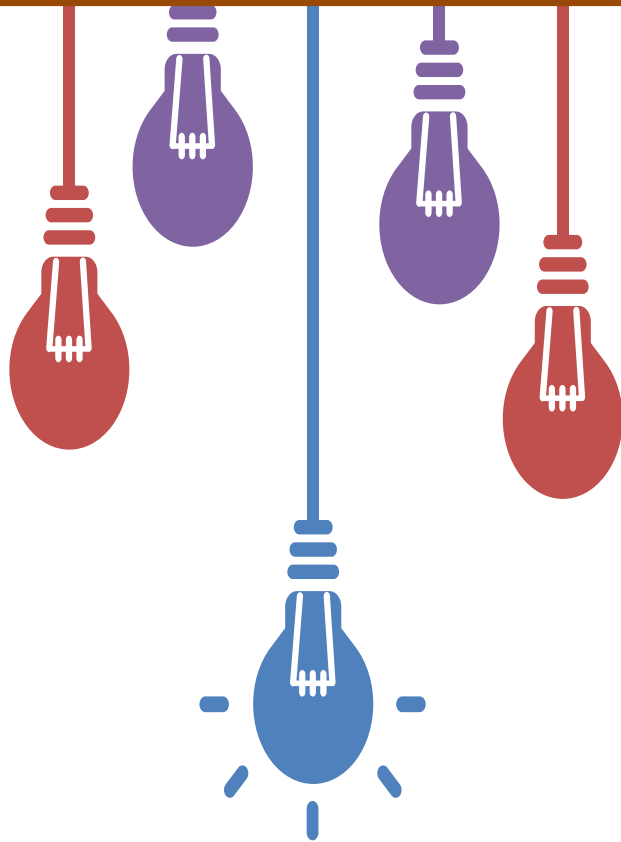
Menggunakan website <http://lens.org/> bagi tujuan carian paten



## Objektif Utama:

Memberikan kesedaran “awareness” mengenai keperluan dan kepentingan menghasilkan penyelidikan yang unik dan inovatif

# KEPENTINGAN CARIAN PATEN



KPM telah mula memperkenalkan keperluan carian paten pada tahun 2020



**Menghasilkan penyelidikan yang unik, penting dan inovatif**

Membantu penyelidik mengetahui apa yang orang lain buat dalam bidang yang mereka selidik, dan mengesahkan sama ada kerja penyelidik adalah **unik, penting dan inovatif**.



**Sumber carian data penyelidikan**

Data-data penting bukan sahaja terdapat dalam artikel-artikel jurnal yang telah diterbitkan, tetapi juga dalam paten.



**Dapatkan maklumat yang lebih baik**

Segera mempatenkan hasil ciptaan/inovasi yang dianggap bernilai, maka ianya juga sangat berguna untuk penyelidik.



**Gunakan ciptaan secara percuma**

Paten akan tamat tempoh selepas 20 tahun, yang bermaksud sesiapa sahaja boleh menggunakan ciptaan ini. Selain itu, walaupun paten masih sah, mungkin terdapat peruntukan untuk menggunakannya dalam penyelidikan.

# Modul Permohonan MyGRANTS > “ADDITIONAL INFORMATION”



Patent Search (describe how your research output shall produce an innovation idea or technology that has the potential to be a solution to future stakeholders (community, industry, government etc.) and offer a unique proposition not found in potential competitors)

To identify if the researcher is able to coherently present a compelling argument for their proposal in light of the IP landscape and factors identified in the (Yes/No) Section. The answer would reflect an understanding of their research advantage and limitations and the prospect of moving the completed research beyond this stage of funding.

Please download and fill in the Simplified Patent Search Report, and attach it as a file [Simplified Patent Search Report](#)

500 words left

Attach File Delete File

- 1) Has the number of patent published INCREASED for the past 10 years?
- 2) Has the number of patent published DECREASED for the past 10 years?
- 3) Does the description of the highest CPC Classification accurately represent the area of technology or innovation that the research aims to produce?
- 4) Does the list of previous patent applicants include potential STAKEHOLDERS for the research output?
- 5) Does the list of previous patent applicants include potential COMPETITORS for the research output?
- 6) Does the patent search yield similar patents already filed in Malaysia?
- 7) Does the patent search yield similar patents already filed in Thailand, Indonesia and Singapore?
- 8) Does the inventor with the highest number of patents filed or awarded possess more than 2 patents to his/her name?



## SIMPLIFIED PATENT SEARCH REPORT

[using Lens.org (<http://lens.org/>)]

Version 1/2020

Keywords Used	(type in the keywords used in your search)	The Number of Patents Found using Keywords Used	(copy and paste the number)
		Link to the Search Result on Lens.org	(paste the link of your search result copied from the Share box)

### Answer these questions using 'YES' or 'NO'

No.	Questions	(YES / NO)
1	Has the number of patent published INCREASED for the past 10 years? If yes, it highlights an increasing interest to protect ideas associated with keywords used. Increasing interest may indicate developing or sunrise sector showing potential for substantial and rapid growth.	
2	Has the number of patent published DECREASED for the past 10 years? If yes, it highlights a decreasing interest in sectors associated with keywords used. Decreasing interest may indicate a declining or sunset sector showing diminishing interest to protect ideas or absence of new innovation.	
3	Does the description of the highest CPC Classification accurately represent the area of technology or innovation that the research aims to produce? If yes, it indicates correct keyword use that reflect understanding of the nature of the potential research output, its functionality, purpose and composition.	
4	Does the list of previous patent applicants include potential STAKEHOLDERS for the research output? If yes, it shows that the research output is aligned with future stakeholders and has the potential to be commercialised.	
5	Does the list of previous patent applicants include potential COMPETITORS for the research output? If yes, it shows that the research output has potential and is pursued by existing stakeholder in the sector.	
6	Does the patent search yield similar patents already filed in Malaysia? If yes, does your research output differ from the patents already filed?	
7	Does the patent search yield similar patents already filed in Thailand, Indonesia and Singapore? If yes, does your research output differ from the patents already filed?	
8	Does the inventor with the highest number of patents filed or awarded possess more than 2 patents to his/her name? If yes, it shows possible continuous pursuant of ideas associated with the research output by other interested parties.	

## Simplified Patent Search Report Using [Lens.org](https://lens.org)

### NOTE

This is a [one page simplified](#) and stripped down version of a [patent search](#) that is designed to create intellectual property awareness to [KPM \(Ministry of Education Malaysia\)](#) grant applicants. Using this one-page summary and [Lens.org](https://lens.org), applicants would be able to:

- 1) Familiarise with a basic patent search process;
- 2) View basic information associated with their research;
- 3) Identify the novelty position of their research application with regards to the intellectual property landscape;
- 4) Identify other actors (potential collaborators/stakeholders/competitors) in the sectors associated with their research areas;
- 5) Identify potential trends in intellectual property interest;
- 6) See historical patent trends associated their research;
- 7) Identify if neighbouring countries (Singapore, Indonesia, Thailand) has developed similar ideas; and
- 8) Avoid submitting research proposals that lacks novelty and potential economic and societal impact.

# Conduct Patent Search Using **Lens.org**

The screenshot shows the Lens.org website interface. On the left is a sidebar with search filters for Scholarly Works and Patents. The main content area features a navigation bar, a search bar, and a large banner with the text "Solving The Problem of Problem Solving™". Below the banner are two buttons: "Start Exploring Lens" and "Create Free Account". A smaller version of the banner is shown on the right side of the main content area.

← → ↻ lens.org/lens/ 🔑 ☆ 🌐

**LENS.ORG**  
Solving The Problem Of Problem Solving™

Our Apps ▾ API & Data **New** Lens Partners Feature Tour About ▾ English ▾

Signed in as azlinjamil@utm.my ▾

**Scholarly Works** 🔍

Search 211,442,021 Scholarly Works 🔍

Flags ▾

Institution ▾

Institution Country/Region ▾

Author ▾

Identifier Type ▾

Funding ▾

Journal ▾

Conference Name ▾

Publication Type ▾

Publisher ▾

Subject Matter ▾

Open Access ▾

Scholar Structured Search 🔍

**Patents** 🔍

Search 119,283,226 Patents 🔍

Jurisdictions ▾

**Solving The Problem of Problem Solving™**

Lens serves global patent and scholarly knowledge as a public good to inform science and technology enabled problem solving.

[Start Exploring Lens](#) [Create Free Account](#)

**LENS.ORG**  
Solving The Problem Of Problem Solving™

A **free** and **open** platform serving global patent and scholarly knowledge as a public good for science- and technology- enabled problem solving.

**Features For Everyone**

Discover, analyse, and map global innovation knowledge. Bridging the cultures of scholarly research with invention and industry, the Lens offers the following capabilities

## The Things You Need To Have To Start



# Internet



# Conduct Patent Search Using **Lens.org** Let's Start

The screenshot shows the Lens.org website interface. On the left, there is a sidebar with search filters for Scholarly Works and Patents. The main content area features a navigation bar with links for 'Our Apps', 'API & Data', 'Lens Partners', 'Feature Tour', and 'About'. A user is signed in as 'azlinjamil@utm.my'. The main banner displays the text 'Solving The Problem of Problem Solving™' and 'Lens serves global patent and scholarly knowledge as a public good to inform science and technology enabled problem solving.' Below this, there are two buttons: 'Start Exploring Lens' and 'Create Free Account'. A secondary banner on the right side of the main content area repeats the Lens.org logo and text: 'A free and open platform serving global patent and scholarly knowledge as a public good for science- and technology- enabled problem solving.'

← → ↻ lens.org/lens/

**IOI LENS.ORG**  
Solving The Problem Of Problem Solving™

Our Apps ▾ API & Data **New** Lens Partners Feature Tour About ▾ English ▾

Signed in as azlinjamil@utm.my ▾

**Scholarly Works**

Search 211,442,021 Scholarly Works

Flags ▾  
Institution ▾  
Institution Country/Region ▾  
Author ▾  
Identifier Type ▾  
Funding ▾  
Journal ▾  
Conference Name ▾  
Publication Type ▾  
Publisher ▾  
Subject Matter ▾  
Open Access ▾  
Scholar Structured Search

**Patents**

Search 119,283,226 Patents

Jurisdictions ▾

**Solving The Problem of Problem Solving™**

Lens serves global patent and scholarly knowledge as a public good to inform science and technology enabled problem solving.

[Start Exploring Lens](#) [Create Free Account](#)

**IOI LENS.ORG**  
Solving The Problem Of Problem Solving™

A free and open platform serving global patent and scholarly knowledge as a public good for science- and technology- enabled problem solving.

**Features For Everyone**

Discover, analyse, and map global innovation knowledge. Bridging the cultures of scholarly research with invention and industry, the Lens offers the following capabilities



# Lens.org – Front Page

**LENS.ORG**  
Solving The Problem Of Problem Solving™

Scholarly Works

Search 211,442,021 Scholarly Works

Flags

Institution

Institution Country/Region

Author

Identifier Type

Funding

Journal

Conference Name

Publication Type

Publisher

Subject Matter

Open Access

Scholar Structured Search

Patents

Search 119,283,226 Patents

Our Apps API & Data Lens Partners Feature Tour About English

**Start Exploring Lens** **Create Free Account**

**Explore Lens.org** **Create your own account: To enable all features in Lens.org**

**Login using your username & password** **Login**

**Click here to watch a brief video regarding Lens.org**

**Solving The Problem of Problem Solving™**

Lens serves global patent and scholarly knowledge as a public good to inform science and technology enabled problem solving.

**Features For Everyone**

**The  $\beta$ -Chemokine Receptors CXCR1 and CXCR2 Facilitate Infection by Primary HIV-1 Isolates**

Open Access: 100%  
Citing Patents: 167  
Citing Scholarly Works: 2125

**Citing Scholarly Works**

**Citing Patents**



# Fill in Details

## Field Tips

- Search fields...
- General
- Family
- Classification
- Citations
- Sequences

## New Patent Search

Patent Query = water filter

1. Insert Keywords

Field

All Fields

Predicate:  AND  OR

water filter

Search

Dates:  Published  Filed  Priority

From

To

Query Language

English

ORCID Lookup

Enter Name or ORCID ID

3. Select Classification: CFC

The Cooperative Patent Classification (CPC) is a patent classification system, which has been jointly developed by the European Patent Office (EPO) and the United States Patent and Trademark Office (USPTO)

Classifications

Explore Patent Classifications

CPC  IPC  US

A human necessities

B performing operations transporting  
(Notes & Warnings)

C chemistry metallurgy  
(Notes & Warnings)

D textiles paper

E fixed constructions

Other Options

Full Text  One doc per family  Stemming

2. Select Asian Country: Malaysia, Indonesia, Singapore, Thailand

Jurisdictions

- Republic of Moldova
- Montenegro
- Mongolia
- Macau
- Malta
- Malawi
- Mexico
- Malaysia
- Nicaragua

Doc Type

- Patent Application
- Granted Patent
- Limited Patent
- Search report

4. Search

Search

# Patent Search Results

433 Patent Results (396 families)

(water filter) Refine Search

Patent Results

Patents (433) = water filter

Filters: Jurisdiction = ( ID , MY , TH , SG )

Patents Cited Works

Expand All Save Query **Share Results** Export Results Cites Works Group Families Hide Preview Analysis Sort by Relevance

Water Filtering Device  
 Published: Dec 30, 2013 Filed: May 8, 2012 Earliest Priority: May 12 2011 Family: 19 Cited Works: 0 Cited by: 0 Cites: 0  
 Additional Info:  
 Applicant: Strauss Water Ltd  
 Patent Application SG 194900 A1 187-746-826-248-401

Water Filter  
 Published: Sep 29, 2015 Filed: Feb 24, 2014 Earliest Priority: Feb 24 2014 Family: 1 Cited Works: 0 Cited by: 0 Cites: 0  
 Additional Info:  
 Applicant: Hydrochem S Pte Ltd  
 Patent Application SG 10201400149W A 142-832-340-957-425

System And Method For Treating Raw Water  
 Published: Oct 30, 2012 Filed: Mar 25, 2011 Earliest Priority: Mar 25 2011 Family: 1 Cited Works: 0 Cited by: 0 Cites: 0  
 Additional Info:  
 Applicant: Gwt Water Technology Pte Ltd  
 Patent Application SG 184596 A1 027-322-741-987-319

Filter System With Removable Enhancement Media  
 Published: Dec 28, 2012 Filed: May 9, 2011 Earliest Priority: May 14 2010 Family: 12 Cited Works: 0 Cited by: 0 Cites: 0  
 Additional Info:  
 Applicant: Paragon Water Systems Inc  
 Patent Application SG 185407 A1 161-022-022-259-052

Publications By Year

Click and drag to select a time period

Jurisdictions

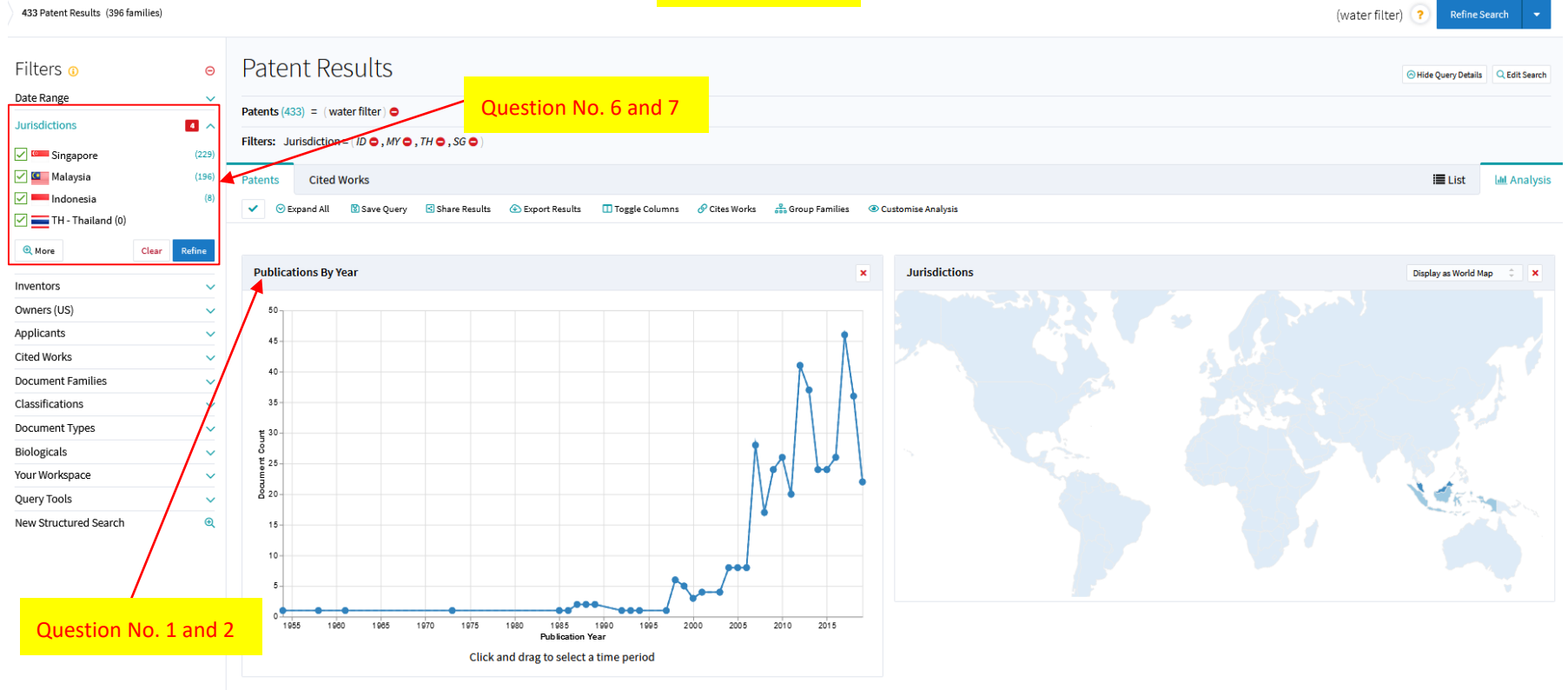
Numbers of Patent related to the keywords

Get Link to share results here

To view the Analysis of Patent Search

# Analysis Details

Analysis details



# Other display options

**Filters**

**Date Range**

**Jurisdictions**

- Singapore (229)
- Malaysia (196)
- Indonesia (8)
- TH - Thailand (0)

[More](#) [Clear](#) [Refine](#)

**Inventors**

**Owners (US)**

**Applicants**

**Cited Works**

**Document Families**

**Classifications**

**Document Types**

**Biologicals**

**Your Workspace**

**Query Tools**

**New Structured Search**

Expand All Save Query Share Results Export Results Toggle Columns Cites Works Group Families Customise Analysis

AMIAD WATER SYSTEMS LTD	NEP HOLDINGS MALAYSIA BHD	SAMSUNG ELECTRONICS	CRYSTAL LAGOONS CURACAO BV
13	11	9	7
SHARP	INDIAN INST TECHNOLOGY	CELANESE ACETATE LLC	ECOWATER SYSTEMS LLC
5	4	4	4

**Inventors** Display as Bar Chart

Inventor	Document Count
SENG TEE CHEE	8.5
SHIN JUNG-SOO	7.5
BEN-HORIN RA ANAN	7.5
SHAMIR YUVAL	7.0
MUSSEL UD	7.0
NURIEL SHAHAR	6.0
SINKULA DAVID	4.0
SHTEKELMACHER RUVEN	4.0
FISCHMANN T FERNANDO	4.0
ZUR BOAZ	4.0

Document Count

**Display Options**

Select all

- Publications By Year
- Jurisdictions
- Owners (US)
- Applicants
- Document Type
- Inventors
- CPC Classifications
- IPCR Classifications
- US Classifications
- Biological Organisms
- Top Patents Cited by Other Patents
- Top 100 Patents Scatter Plot

[Reset to Defaults](#)

[Share this analysis](#)

Patent Application 116

unknown 317

**Patents Scatter Plot** Settings

Generating Analysis  
Shouldn't take too long. Thanks for your patience.

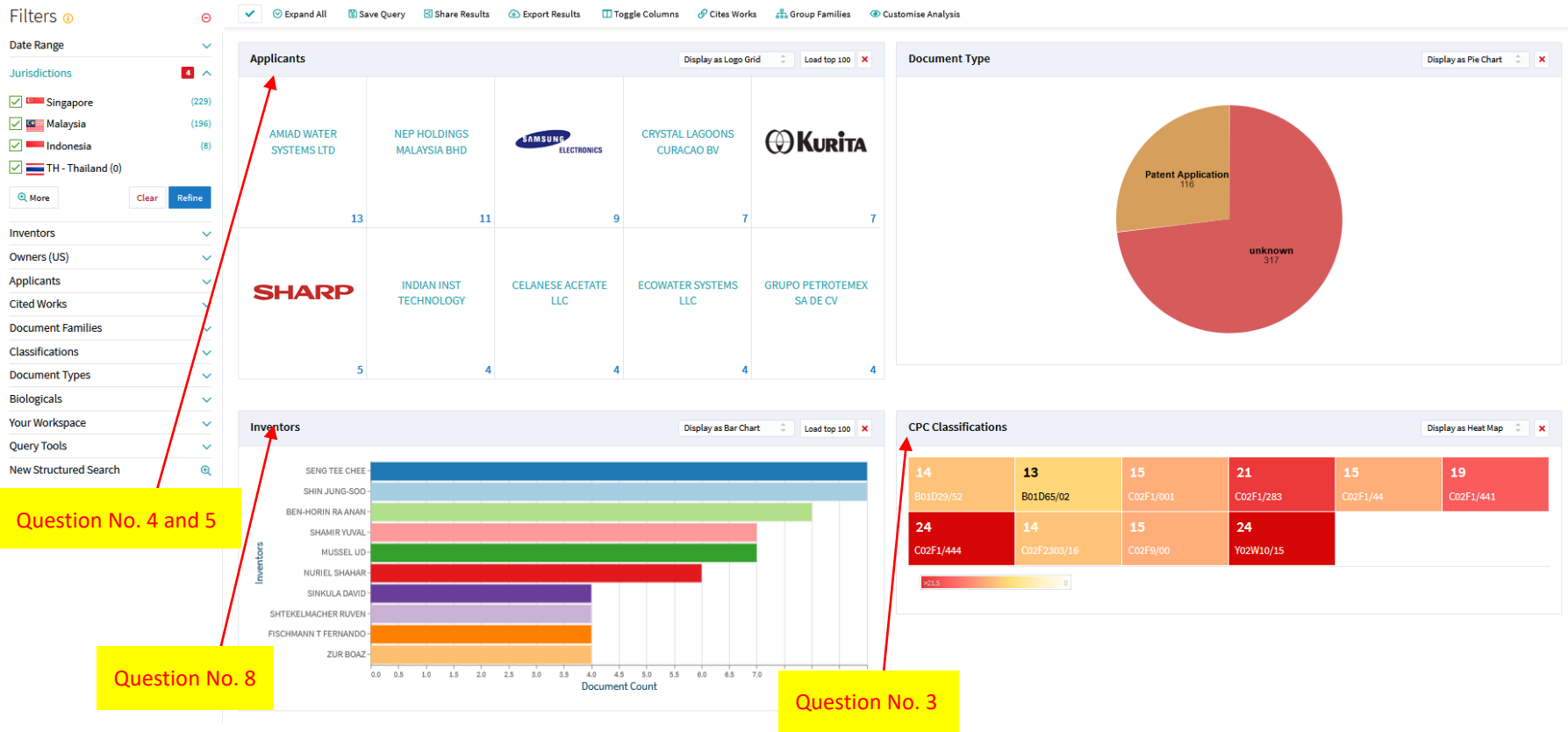
[Add Facet](#)

- Scroll down on Analysis details

- "Add Facet" : to add other display options



# The Detail Analysis Report



Refine Search Again...

THANK YOU!