



# PUBLIC HEALTH MEDICINE

**MASTER OF PUBLIC HEALTH & DOCTOR OF PUBLIC HEALTH**

## **Course Synopsis**



DEPARTMENT OF COMMUNITY MEDICINE  
[commed@iiium.edu.my](mailto:commed@iiium.edu.my)



# **INTRODUCTION**

According to the World Health Organization (WHO), “Public health refers to all organized measures (whether public or private) to prevent disease, promote health, and prolong life among the population as a whole. Its activities aim to provide conditions in which people can be healthy and focus on entire populations, not on individual patients or diseases.”

Its specialization encompasses two programmes which are Master of Public Health (MPH) and Doctor of Public Health (DrPH). This is in line with Specialty-Specific Requirements (SSR) for public health medicine and are intricately linked to the Malaysian Medical Council (MMC) Malaysian Standards for Medical Specialist Training 2019.

The MPH and DrPH is conducted by the Department of Community Medicine (COMMED) of International Islamic University Malaysia. The general objective of the establishment of the programmes is to provide comprehensive preparative public health training imbued with strong humanistic and Islamic values. The students will also be equipped with knowledge and skill in public health as well as the ability to analyse issues in public health using critical evaluation and applied research. With that we hope to produce competent public health experts for the country and the world.

For part 1, which is MPH, it is a one-year programme in which graduands will obtain an MPH degree. Following MPH, students must enrol and graduate in part 2, which is the three-year DrPH programme to become a public health medicine specialist.

Both of these programmes are problem-centred and experience-based programme, which consist of interactive lectures, flipped classrooms, student-oriented learning, seminars, field visits, assignments, and research component. The acquisition and propagation of knowledge in the programme is in line with the University Philosophy on Islamization of Human Knowledge, Integration, and Internationalization to achieve Comprehensive Excellence (IIICE).

## OBJECTIVES

The graduates from the **Master of Public Health (MPH)** programme IIUM are expected to attain or achieve the following Program Educational Objectives within a few years of graduation:

- a. Professionals who are knowledgeable and competent in public health discipline.
- b. Professionals who are able to communicate effectively and demonstrate good leadership quality in an organization.
- c. Professionals who are capable to solve public health problems innovatively, creatively, and ethically through sustainable approach.
- d. Professionals who able to demonstrate leadership skills and recognize the need of lifelong learning for successful career advancement.
- e. Professionals who are ethically deliver public health services in line with Islamic concepts and value.

The graduates from the **Doctor of Public Health (DrPH)** programme IIUM are expected to attain or achieve the following Program Educational Objectives within a few years of graduation:

- a. Professionals who apply the public health knowledge, understanding and experiences in providing quality services in government, academic and research institutions locally and globally.
- b. Professionals who pursue lifelong learning and ethically contribute to innovative practices and technology using research and complex problem-solving skills.
- c. Professionals who demonstrate commitment towards sustainable development for the betterment of society.
- d. Professionals who are ethically deliver public health services in line with Islamic concepts and value.

# OUTCOME

Upon completion of **MPH**, students should be able to:

1. Incorporate, critically appraise and apply public health sciences for monitoring, diagnosis and investigation of public health problems and emergencies.
2. Assess and use latest best communication strategies across diverse audience to inform, educate and influence individual, organisation, community and policy makers about public health issues and programmes, with a focus on poor, vulnerable and marginalized groups and individuals.
3. Plan, design, develop and implement strategic planning and policy; while applying human resource management and leadership skill; using current best available resources and information technology.
4. Measure and report effectiveness, accessibility and quality of public health programmes, towards ensuring universal health coverage (UHC) and healthy lives and well-being for all.
5. Demonstrate cultural sensitivity in ethical and professional discourse and analysis; and to internalise Islamic virtues, values and practice in all aspects of public health activities.



# OUTCOME

Upon completion of **DrPH**, students should be able to:

1. Analyse and interpret a broad-range of disciplines and health-related data sources for monitoring and assessment of public health problems and emergencies in the community by using latest available software and technologies.
2. Synthesize and apply basic sciences theories and evidence-based research to diagnose and investigate public health problems and emergencies.
3. Disseminate and influence public health policy and research outcomes to educate and advocate individual, organisation and community with diverse background.
4. Assess and use latest best communication strategies across diverse audience to inform, educate and influence individual, organisations, community and policy makers about public health issues and programmes, with a focus on poor, vulnerable and marginalized groups and individuals.
5. Interact, communicate and persuade public from various communities, cultures and organisations to engage, participate and collaborate in public health programmes, as a form of partnership for sustainable health goals.
6. Lead public health organisation and to provide fiscally strategic and operational plan for sustainable progression and development.
7. Relate and lead the enforcement of relevant public health laws in implementing health programmes.
8. Measure and report effectiveness, accessibility and quality of public health programmes, towards ensuring universal health care (UHC) and healthy lives and well-being for all.
9. Demonstrate cultural sensitivity in ethical and professional discourse and analysis; and to internalise Islamic virtues, values and practice in all aspects of public health activities.

ENTRY REQUIREMENTS

Criteria	MPH	DrPH
Malaysian applicant	<div><div>a. Possesses a degree of MBBS / MD or other equivalent undergraduate medical qualification from an institution recognized by the relevant authority (e.g. Malaysian Medical Council (MMC), Ministry of Higher Education, etc).</div><div>b. At least one year of post-graduation public health exposure certified by the relevant authorities.</div></div>	<div><div>a. Possesses a degree of MBBS / MD or other equivalent undergraduate medical qualification from an institution recognized by the relevant authority (e.g. Malaysian Medical Council (MMC), Ministry of Higher Education, etc).</div><div>b. At least one year of post-graduation public health experience certified by the relevant authorities.</div></div> <div>AND</div> <div>Degree in Master of Community Health/ Community Medicine or Master of Public Health from International Islamic University (IIUM) or other universities that is recognized by the Senate of International Islamic University (IIUM) with CGPA≥3.0.</div>
International applicant	<div><div>a. Possesses a degree of MBBS / MD or other equivalent undergraduate medical qualification from an institution recognized by the relevant authority (e.g. Malaysian Medical Council (MMC), Ministry of Higher Education, etc).</div><div>b. At least one year of post-graduation public health exposure.</div></div>	<div><div>a. Possesses a degree of MBBS / MD or other equivalent undergraduate medical qualification from an institution recognized by the relevant authority (e.g. Malaysian Medical Council (MMC), Ministry of Higher Education, etc).</div><div>b. At least one year of post-graduation public health experience certified by the relevant authorities.</div></div> <div>AND</div> <div>Degree in Master of Community Health/ Community Medicine or Master of Public Health from International Islamic University (IIUM) or other universities that is recognized by the Senate of International Islamic University (IIUM) with CGPA≥3.0.</div>

# ENTRY REQUIREMENTS

Criteria	MPH	DrPH
English language	International English Language Testing System (IELTS) with minimum score of 5.0.  OR  Test of English as a Foreign Language (TOEFL) with minimum score of 500 (paper), 173 (computer) and 60 (internet).  Exemption may be given to those who have undertaken regular programmes of studies and graduated from universities that use English as the medium of instruction in English-speaking countries or who have graduated from the IIUM in a programme with English as the medium of instruction.	
Other requirements	Favourable reports from TWO (2) referees.	

# PROGRAM OVERVIEW

For MPH, total credit hour is 44.

Phase 1	Course code	Credit hours
Semester 1	19 credit hours	
Biostatistics	STAT7311	3
Principle of epidemiology	EPID7211	2
Family health management	FAMH7312	3
Principle of health management	HPAM7311	3
Social and Behavioral Determinants of Health	SABS7211	2
Epidemiology method	EPID7232	2
Research project I	RESM7211	2
Global health	GLOB7211	2
Semester 2	17 credit hours (13 CH: core courses, 4 CH: elective courses)	
Principle of Occupational & Environmental health	OCEN7331	3
Demography	DEMO7231	2
Outbreak investigation	EPID7233	2
Health promotion and disease prevention theories and models	SABS7232	2
Research project II	RESM7232	2
Islamic issues in public health	GLOB7232	2
Elective	-	2
Elective	-	2
Semester 3	8 credit hours	
Research project III	RESM7853	8



# PROGRAM OVERVIEW

For DrPH, the total credit hours is 92. Residency does not contribute to the credit hours, as it is evaluated as pass/fail.

Phase 2	Course code	Credit hours
<b>Year 1 (Semester 1)</b>	<b>18 credit hours</b>	
Epidemiology of Communicable Diseases	EPID 8211	2
Epidemiology of Non-communicable Diseases	EPID 8212	2
Outbreak management	EPID 8213	2
Planning and Evaluating of Public Health Program	HPAM 8212	2
Managing maternal and child health programme	FAMH8211	2
Occupational and Environmental Health Laws	OCEN8211	2
The Global Climate Change	OCEN8232	2
Managing Data for Research	STAT 8212	2
Causal Inference in Epidemiology	STAT 8211	2
<b>Year 1 (Semester 2)</b>	<b>18 credit hours</b>	
<u>A) CORE COURSES</u>		12
Vector Borne Diseases	EPID 8234	2
Health informatics	HPAM 8233	2
Food and Water Safety	OCEN 8233	2
Communicating Research	RESM 8211	2
Writing Research Proposal	RESM 8232	2
Global burden of disease	GLOB 8231	2
<u>B) ELECTIVE COURSES</u>		6
Cancer Epidemiology	EPID 8245	2
Clinical Epidemiology	EPID 8246	2
Geriatric Health	FAMH 8244	2
Adolescent Health	FAMH 8245	2
Health Economics	HPAM 8246	2
Environmental Sanitation and Engineering	OCEN 8244	2
Geographical Information System (GIS) in Public Health	OCEN 8245	2
Public Health Disaster Preparedness and Emergency Response	OCEN 8246	2
Toxicology	OCEN 8247	2
Occupational Medicine	OCEN 8248	18
Complex Sampling Analysis	STAT 8243	18

COURSE SYNOPSIS – MASTER OF PUBLIC HEALTH & DOCTOR OF PUBLIC HEALTH

Phase 2	Course code	Credit hours
Year 1 (Semester 3)	8 credit hours	
Dissertation I - Research proposal	DISS 8851	8
Year 2 (Semester 1)	20 credit hours	
Dissertation II	DISS 82012	20
Year 2 (Semester 2)	Pass/Fail	
Public Health Residency I	RESI	0
Year 2 (Semester 3)	Pass/Fail	
Public Health Residency II	RESI	0
Year 3 (Semester 1)	Pass/Fail	
Public Health Residency III	RESI	0
Year 3 (Semester 2)	20 credit hours	
Dissertation III - Progress report	DISS 82033	20
Year 3 (Semester 3)	8 credit hours	
Dissertation IV - Thesis examination	DISS 8854	8

## KULLIYYAH CORE COURSES

1. Islamic Input in Medical Practice (IIMP)
2. Good Clinical Practice (GCP)
3. Research Methodology (integrated under the course code RESM)
4. Biostatistics (integrated under the course code STAT)

## SCHEDULED INTAKE

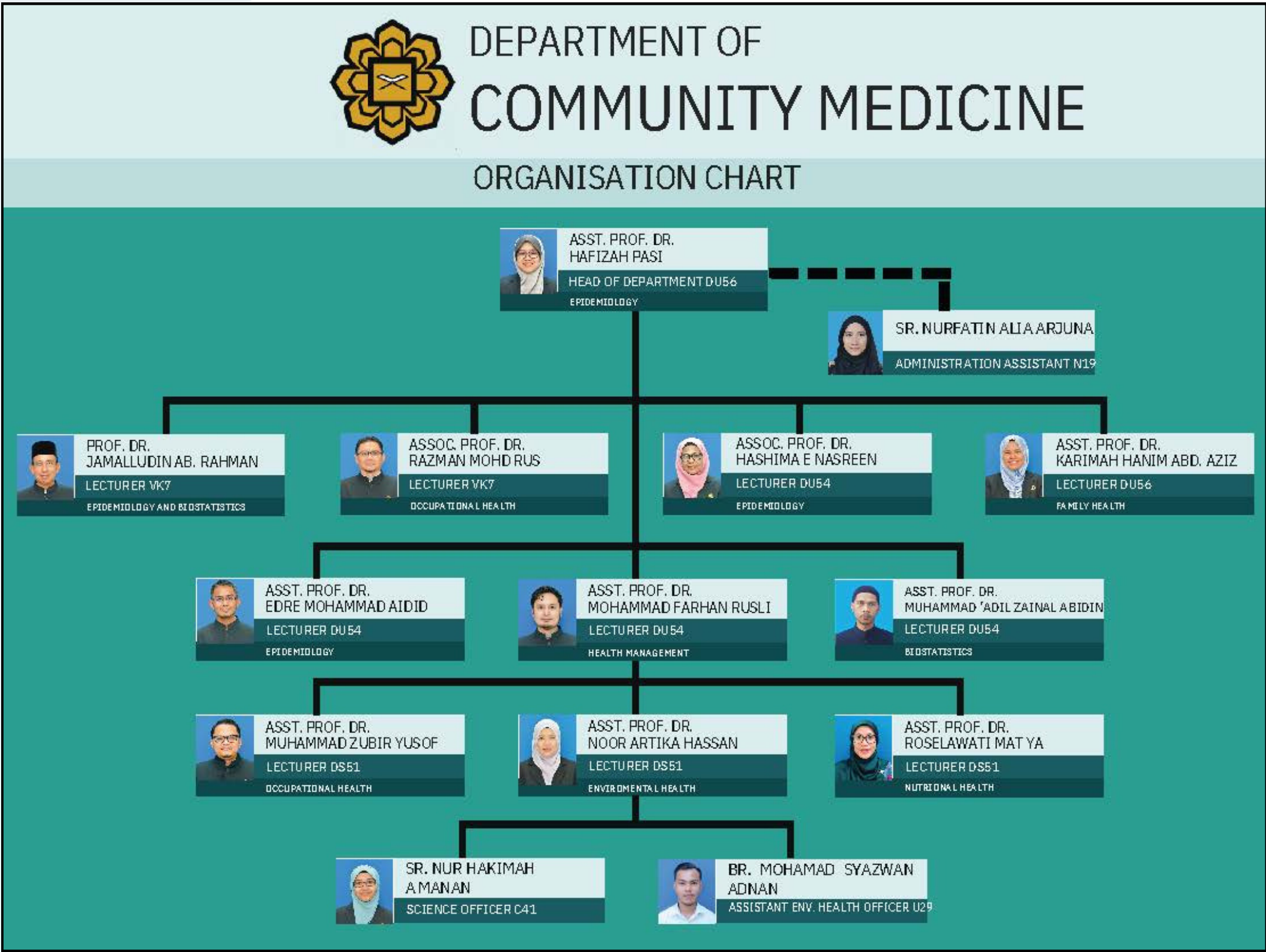
Once a year in the month of October.

## COMMED POSTGRADUATE COORDINATORS

1. Dr Edre Bin Mohammad Aidid  
Postgraduate Programme Coordinator (PPC) and MPH coordinator  
[edreaidid@iium.edu.my](mailto:edreaidid@iium.edu.my)
2. Dr Muhammad 'Adil Bin Zainal Abidin  
DrPH coordinator  
[adilza@iium.edu.my](mailto:adilza@iium.edu.my)
3. Dr Muhammad Zubir Bin Yusof  
MSc and Ph.D coordinator  
[zubiryusof@iium.edu.my](mailto:zubiryusof@iium.edu.my)



# COMMED ORGANISATIONAL CHART



## CONTACT US

Department of Community Medicine  
Level 4, Kulliyyah of Medicine,  
International Islamic University Malaysia,  
Jalan Sultan Ahmad Shah, Bandar Indera Mahkota,  
25200 Kuantan, Pahang Darul Makmur.  
Phone: 09-570 4592  
Email: [commed@iium.edu.my](mailto:commed@iium.edu.my)

